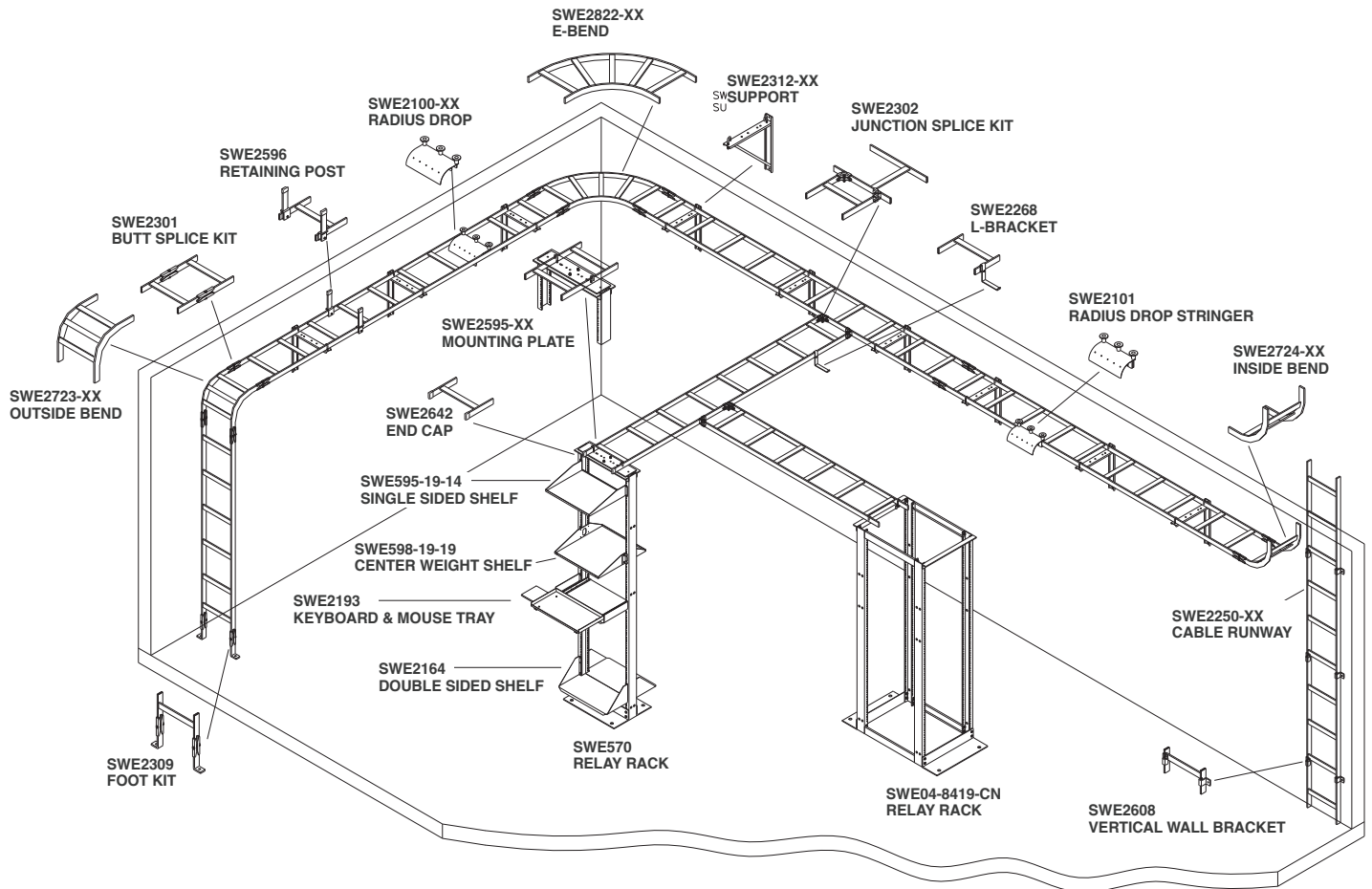


Cable Runway



Cable Runway

SWE2250 Series

Features

- 3/8" x 1-1/2" x .065" rectangular steel tubing construction
- Cross members welded on 12" centers
- Standard length of 9' 11-1/2"
- Choice of colors: Color Code = "x" Black (BLK) or ASA61 Gray (G), Gold Zinc (GZ) or Black Zinc (BZ)

Note: BZ and GZ finished ladder have "C" channel cross members

Part Number	Description
SWE2250-6x	9' 11-1/2"L x 6"W
SWE2250-12x	9' 11-1/2"L x 12"W
SWE2250-18x	9' 11-1/2"L x 18"W

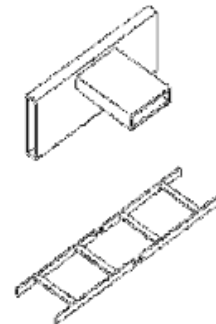


SWE2250 Series

Easy Ship Cable Runway Kit SWE2170-12KT

Features

- Packaged to meet UPS requirements without additional charge
- Cross members welded on 12" centers
- Kit includes:
 - (2) pc cable runway 54" (4' 6") long x 12" wide
 - (1) SWE2301GZ - Butt Splice Kit
- 200 lb. weight capacity
- Choice of colors: Color Code = "x" Black (B) or ASA61 Gray (G)



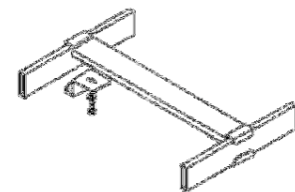
SWE2170-12KT

Movable Cross Member SWE2115

Features

- Provides cable drop at any point between cross members
- Easy bolt on installation - mounts to any 1-1/2" x 3/8" runway
- Includes zinc plated hardware

Part Number	Description
SWE2115-6x	Fits 6"W Cable Runway
SWE2115-12x	Fits 12"W Cable Runway
SWE2115-18x	Fits 18"W Cable Runway
SWE2115-24x	Fits 24"W Cable Runway



SWE2170-12KT

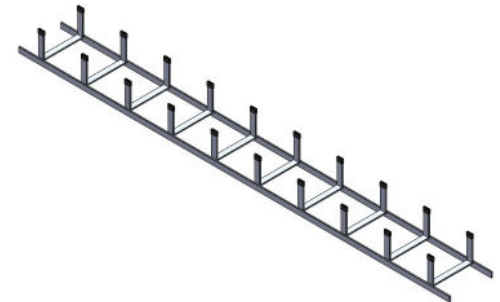
Cable Runway

SWE2606 series

Features

- 3/8" x 1-1/2" x .065" rectangular steel tubing construction
- Cross members welded on 12" centers with vertical members on both sides to form a trough (accommodates larger cable runs)
- Use with heavy duty splice kits (SWE2298x - HD Junction Splice Kit and SWE2299x - HD Butt Splice Kit)
- Standard length of 9' 11-1/2"
- Choice of colors: Color Code = "x" Black (BLK) or ASA61 Gray (G)

Part Number	Description
SWE2606-12x	9' 11-1/2"L x 12"W
SWE2606-18x	9' 11-1/2"L x 18"W
SWE2606-24x	11-1/2"L x 24"W

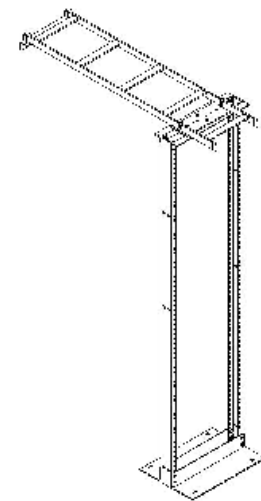


SWE2606 Series

Wall to Rack Kit SWE2911-12

Features

- Provides support for cable between equipment rack and wall
- Equipment Rack not included
- Kit includes:
 - (1) SWE2250-12-54x 12"Wx54"L Runway
 - (1) SWE2421-12x Wall Angle Support
 - (1) SWE2595-12x Rack to Runway Plate
 - (1) SWE2642 End Caps
 - (3) SWE2308GZ J-Bolt Kits
- Choice of colors: Color Code = "x" Black (BLK) or ASA61 Gray



SWE2911-12

Cable Runway

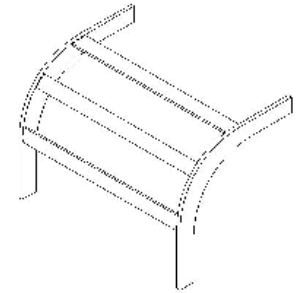
Radius Bends

Features

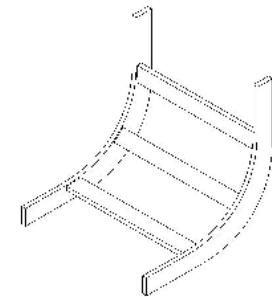
- 3/8" x 1-1/2" x .065 rectangular steel tubing construction
- Designed for category 5 bend radius compliance
- Usable on any 1-1/2" x 3/8" tubular or solid type cable runway
- Cross members welded on 23 degree centers
- Choice of colors: Color Code = "x" Black (BLK) , ASA61 Gray (G), Gold Zinc (GZ) or Black Zinc (BZ)

Note: BZ and GZ finished ladder have "C" channel cross members

Radius Outside Bend	Radius Inside Bend	Width
SWE2723-6x	SWE2723-6x	6"
SWE2723-12x	SWE2724-12x	12"
SWE2723-18x	SWE2723-18x	18"
SWE2723-24x	SWE2724-24x	24"



SWE2723 Outside Bend



SWE2724 Inside Bend

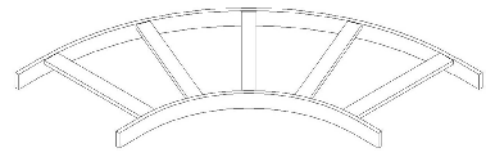
E-Bends

Features

- Creates a gradual 90 degree horizontal sweep for cable runway runs
- Designed for category 5 bend radius compliance
- Usable on any 1-1/2" x 3/8" tubular or solid type cable runway
- Cross members welded on 23 degree centers
- Butt Splice Kits not included
- Choice of colors: Color Code = "x" Black (BLK) , ASA61 Gray (G), Gold Zinc (GZ) or Black Zinc (BZ)

Note: BZ and GZ finished ladder have "C" channel cross members

Part Number	Width
SWE2822-6x	6"
SWE2822-12x	12"
SWE2822-18x	18"
SWE2822-24x	24"



SWE2822