

Ten-N-5 Series Cabinets

Ever wonder, in your data center, how you can fit ten pounds into a five pound bag?

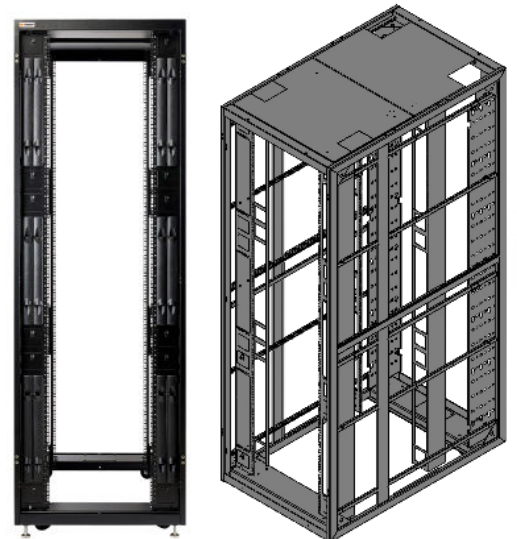
Our Ten-N-5 Cabinet Series is the most innovative Cabinet Series ever created to maximize your footprint and densities.

With the need for more space and high density in the Data Center world, our revolutionary design allows you to have traditional 42/45/48/50 RU cabinet heights and yet provide 54/57/60/62 RU in actual usable space.

In the quest for higher density, this is the perfect cabinet.

Features

- Available in four heights and two styles (Server & Network)
- All welded steel tubing construction provides a 4000 lb. static & deployable load rating
- Seismic Zone 4 rated, UL listed PCI Compliant cabinet
- (2) - 10" wide PDU mounting systems in rear, accepts up to (4) super-wide PDU's (3.5" wide) for A & B redundancy
- Mounting rails (2 pr. included) are cage nut style, punched on EIA 5/8-5/8-1/2" standard spacing and are fully adjustable front to rear and include 12RU of additional mounting space (Rail RU device mounts) increasing RU capacity without adding cabinet height (e.g. a 48U cabinet height provides 60RU equipment space!)
- Optional flush mounted split (top & bottom) side panels supplied with key locked flush latches for optimal security
- Optional doors include Curved Surface mount Perforated and Split Surface Mounted Perforated. All doors include standard swing-handle locks.
- Optional flush mount top includes grommeted brushed cable access openings
- Closed base with large cable and power routing port
- Integrated seismic and deployable shipping tie down points
- Includes top mount frame coupler
- Includes deployable duty casters (4,000 lbs. rated)
- Standard Black or Hammertone White Powder Coat finish in stock
- Custom colors/configurations available



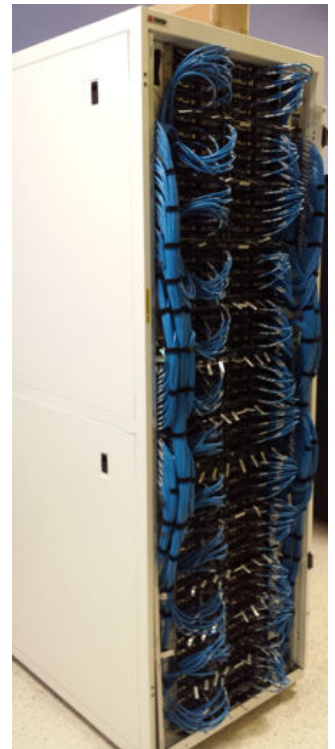
Ten-N-5 Series Cabinets

Pre-Configured Part Number Matrix for Ten-N-5 Cabinets

TN5 - **42** | **30** | **48** | **0** | **S** | **0** | **- 1**
 Product Height in RU Frame Width Frame Depth Side Panel / Network Configuration Top Doors Color

Height in RU	Frame Width	Frame Depth	Sides	Top	Doors	Color
42			0=No Sides	S=Solid Top w/ Brushed Cable Entrance	0=No Doors	1=Black
45			1=One Side		1=Front Flush Perf/Rear Split Perf	2=White
48			2=Two Sides		2=Curved Front Perf/Rear Curved Perf	
52			3=No Sides - Network Cabinet			
			4=One Side - Network Cabinet			
			5=Two Sides - Network Cabinet			

*Add-N to end of part number for Network Version



Ten-N-5 Series Cabinets

Installed Cabinets

