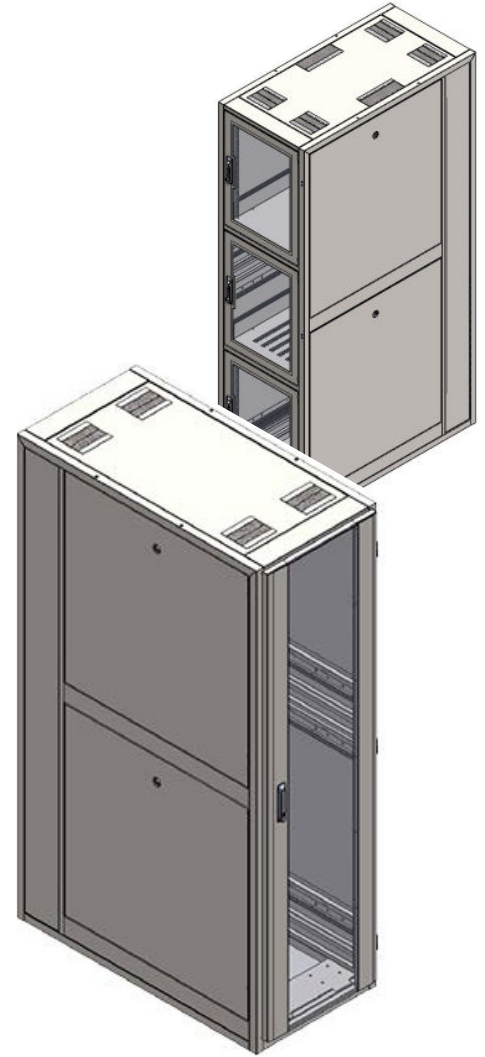


DC Series Cabinets

Cabinets

Features

- Available in four widths, four heights and two depths
- All welded steel tubing construction provides a 4000 lb. static load rating and 3500 lb. rolling/shipping rating for high-density integration
- Seismic Zone 4 rated, UL listed
- PCI Compliant cabinet
- 19" wide rack mount
- 7" wide PDU cavity in rear off-sets PDU's further outside the rail space
- Mounting rails (2 pr. included) are cage nut style, punched on EIA 5/8-5/8-1/2" standard spacing and are fully adjustable front to rear. All are provided with M6 Cage Nuts and screws (bag of 50 each).
- Optional flush mounted split (top & bottom) side panels supplied with key lock for optimal security
- Optional doors include flush mount perforated doors, split flush mounted perforated doors, and curved surface mount perforated doors. All doors include standard swing-handle locks and have high-airflow honeycomb perforations.
- Optional combination locks available
- Optional flush mount top choices include perforated with cable access, or solid with brushed cable openings
- Open base for raised floor ventilation option
- HD formed bottom structure includes both seismic tie down and caster mount features
- Four point leveling
- Includes top mount frame coupler
- Optional deployable duty casters available and are rated for 4,000 lbs.
- Standard Black or Hammertone White Powder Coat finish—custom colors upon request



Pre-Configured Part Number Matrix for DC Series Cabinets

DC | - | **48** | | **24** | | **48** | | **1** | | **P** | | **1** | - | **1** |

Product Height in RU (inches) Frame Width (inches) Frame Depth (inches) Sides Top Doors Color

| Height in RU | Frame Width (inches) | Frame Depth (inches) | Sides | Top | Doors | Color |
|--------------|----------------------|----------------------|-------------|---------------------------------------|---|---------|
| 42 | 24 | 42 | 0=No Sides | N=No Top | 0=No Doors | 1=Black |
| 45 | 28 | 48 | 1=One Side | P=Perf Top w/ Cable Entrance | 1=Front Flush Perf/Rear Flush Split Perf | 2=White |
| 48 | 29.5 | | 2=Two Sides | S=Solid Top w/ Brushed Cable Entrance | 2=Curved Front Perf/Rear Flush Split Perf | |
| 52 | 30 | | | | 3=Curved Front Perf/Rear Curved Perf | |
| | 31.5 | | | | 4=Front Flush Perf/Rear Flush Perf | |

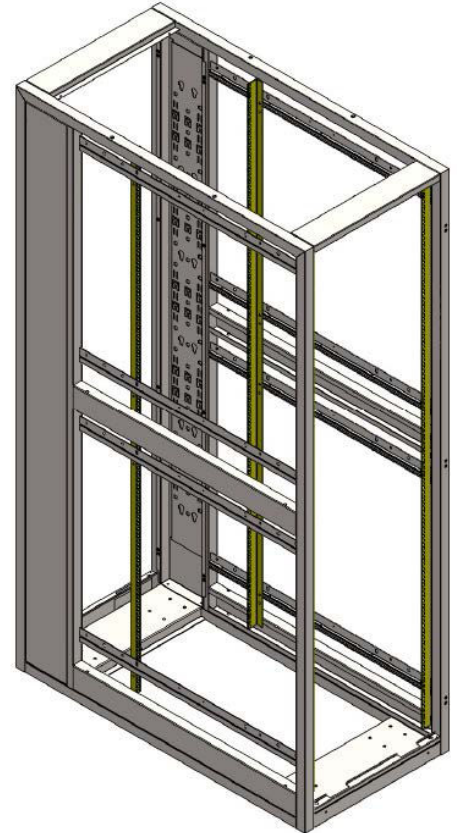


DC Series Cabinets Components

Frames

Features

- Available in 4 heights, 3 widths and 3 depths
- All welded steel tubing construction provides a 4000-lb. static load rating and 3500-lb. rolling/shipping rating for high-density integration
- 7"W PDU cavity in rear
- Includes (2) pair of Cage Nut mounting rails and leveling feet
- Includes top mount frame coupler
- HD formed bottom structure includes both seismic tie down and caster mount features
- Frames are Seismic Zone 4 rated, UL Listed
- Standard Black or Hammertone White Powder Coat finish—custom colors upon request



Mounting Rails

Features

- 12-gauge steel Cage Nut style punched on EIA standard spacing
- RU marks and silk screened number

DC Series Cabinets

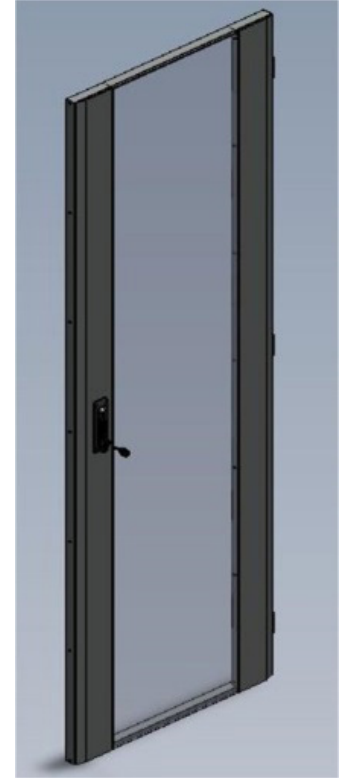
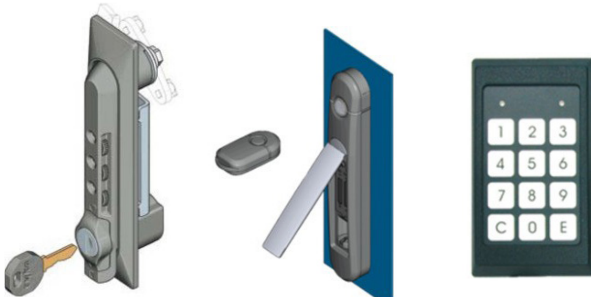
Components

Doors

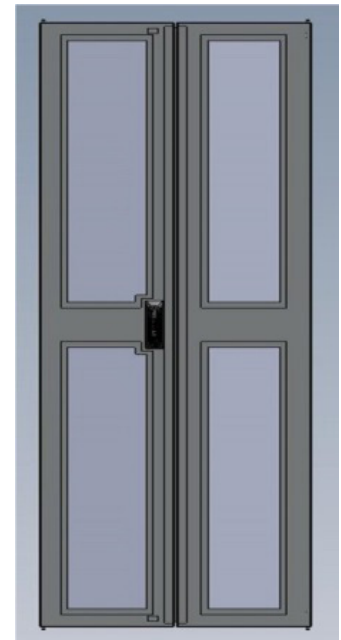
Features

- Carbon steel all welded construction for strength
- Curved perforated front doors (79% open)
- Flush mount perforated rear door is field reversible without tools
- Split perforated rear doors also available
- Doors include standard swing-handle lock
- Optional Electronic Locks, Proximity Locks and Combo Locks available
- Standard Black or Hammertone White Powder Coat finish—custom colors upon request

Lock Options



Perforated Doors



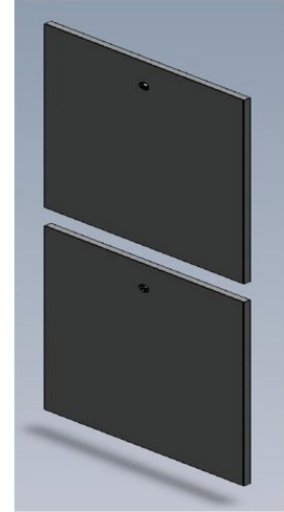
DC Series Cabinets

Components

Side Panels

Features

- Flush mount split side (top/bottom) solid side panels equipped with key
- Lock for optimal security
- Constructed from carbon steel
- Standard Black or Hammertone White Powder Coat finish—custom colors upon request

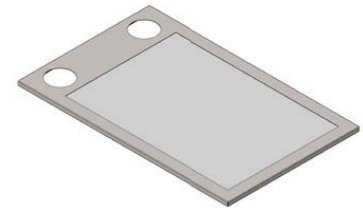


Split Side Panel Set

Cabinet Tops

Features

- Flush mount tops available in 2 styles for 24", 28" and 31.5" wide frames:
 - Perforated top with cable access holes
 - Solid top with brushed cable entry holes
- Carbon steel construction
- Standard Black or Hammertone White Powder Coat finish—custom colors upon request



Perforated Top

DC Series Cabinets

Accessories

Vertical Cable Managers

Features

- Cavity mount Vertical Cable Managers
- 1.62"W w/ cover
- Provides a convenient cable run vertically
- Can be mounted on either side in PDU cavity
- Plastic Cable Manager fingers covers are included
- All steel construction upon request

| Part Number | Frame Height |
|-------------|--------------|
| DC-VCM42Ux | 78" |
| DC-VCM45Ux | 84" |
| DC-VCM48Ux | 90" |
| DC-VCM51Ux | 96" |

"x" = Color code: e.g. DC-VCM42UBK



Vertical Cable Manager
Shown with plastic fingers

PDU Vertical Mounting Bracket

Features

- Available in 4 heights x 7"W
- Full height bracket attaches to cabinet frame to provide options for mounting vertical power distribution units
- Installed in rear PDU cavity—includes outside cover
- Provides tie points for power cords
- Standard Black or Hammertone White Powder Coat finish—custom colors upon request

| Part Number | Description | Height |
|-------------|-------------------------------------|--------|
| DC-PDU42Ux | Full height with outside cover, 7"W | 78" |
| DC-PDU45Ux | Full height with outside cover, 7"W | 84" |
| DC-PDU48Ux | Full height with outside cover, 7"W | 90" |
| DC-PDU52Ux | Full height with outside cover, 7"W | 96" |

"x" = Color code: e.g. DC-PDU42UBK



PDU Bracket with Cover